



# SiCompact 2020 SiCompact 2020 XL

Compact Reverse Vending System



# SiCompact 2020

## Space saving solution for smaller markets

### SiCompact 2020 – for low-volume markets

The SiCompact 2020 is the ideal machine for markets with a low volume of disposable containers and limited space. Easy handling, optimised collection capacity and high processing speed are the hallmarks of the SiCompact 2020. Non-rotating acceptance reduces leakages from residual liquids to prevent contamination.

The Omega 360° recognition in the SiCompact 2020 series eases the workload on your staff while ensuring on-site cleanliness and outstanding customer satisfaction.

### Features

- Acceptance of PET and cans
- 2 Compactors ensure
  - high volume throuput
  - optimum compaction: Up to 60 containers per minute
  - load distribution for durability
- Weight, barcode and security – full container recognition using integrated precision scale
- Simple and easy cleaning

### Design diversity

A variety of front brandings – to suit each individual customer – can be applied.



Example: SiCompact 2020 with standard design



# SiCompact 2020

## Technical data

- 
- Door colour**
- RAL 9005 Jet black silk matt
  - RAL 9006 White aluminium silk matt
  - RAL 9007 Grey aluminium silk matt
  - Further colours on request
- 

- Housing colour**
- RAL 9005 Jet black silk matt
  - RAL 7024 Graphite grey silk matt
- 

- Dimensions**
- 1,880 x 1,350 x 1,130 mm (height x width x depth)\*
  - Service areas left and right: 600 mm
- 

- Containergröße**
- Düsseldorfer palett/half-palett: 840 x 600 x 800 mm (height x width x depth)\*
  - Euro palett: 840 x 1,200 x 800 mm (height x width x depth)\*
- 

- Weight**
- Empty: Approx. 420 kg
- 

- Electrical data**
- 3L/N/PE, 400 V, 50 Hz
- 

- Power**
- 2,630 W / Full power
  - Idle: 70 W
- 

- Conformity**
- CE, UKCA, DPG-certified
- 

- 
- Security concept**
- Software-supported and mechanical protection against manipulation
  - DPG-security package
- 

- Acceptance speed**
- According to 60 containers per minute
- 

- Display**
- High resolution 10.1" HD display with viewing angle
- 

- Container recognition**
- 360 degree container recognition
  - Camera-based image processing (recognition in real time)
  - Scales in the bottle acceptance area
  - Constantly updated container database
- 

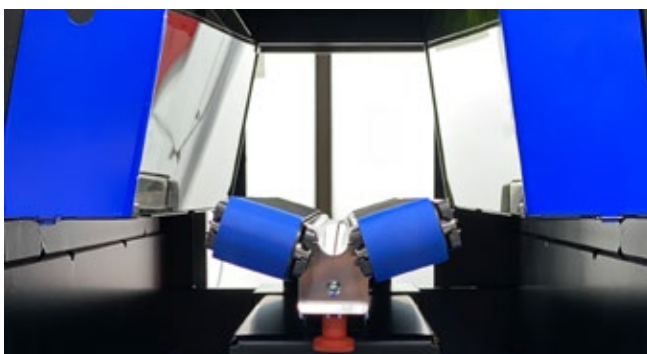
- Output data**
- Thermal printer with cutting unit and presentation function: The receipt is delivered to the front of the machine
  - Receipt data can also be loaded by QR-code onto a mobile phone app
- 

- Interfaces**
- Standard XML-interface
  - LAN (Ethernet)
- 

- User guidance**
- Intuitive user prompting
  - Menu-guided cleaning with animation
  - Error correction assistant
- 

- Temperature**
- +5 °C up to +40 °C with non-condensing
- 

\* The cabinet dimensions may vary due to fixtures and accessoires



Bottle Acceptance



SiCompact 2020 with two roller containers in half-pallet size

# SiCompact 2020 XL

## Technical data

<b>Door colour</b>	<ul style="list-style-type: none"><li>▪ RAL 9005 Jet black silk matt</li><li>▪ RAL 9006 White aluminium silk matt</li><li>▪ RAL 9007 Grey aluminium silk matt</li><li>▪ Further colours on request</li></ul>	<b>Container recognition</b>	<ul style="list-style-type: none"><li>▪ Omega 360 degree container recognition</li><li>▪ Camera-based image processing (recognition in real time)</li><li>▪ Scales in the bottle acceptance area</li><li>▪ Constantly updated container database</li></ul>
<b>Housing colour</b>	<ul style="list-style-type: none"><li>▪ RAL 9005 Jet black silk matt</li><li>▪ RAL 7024 Graphite grey silk matt</li></ul>	<b>Output data</b>	<ul style="list-style-type: none"><li>▪ Thermal printer with cutting unit and presentation function: The receipt is delivered to the front of the machine</li><li>▪ Receipt data can also be loaded by QR-code onto a mobile phone app</li></ul>
<b>Dimensions</b>	<ul style="list-style-type: none"><li>▪ 1,880 x 1,880 x 1,480 mm (height x width x depth)*</li></ul>	<b>Interfaces</b>	<ul style="list-style-type: none"><li>▪ Standard XML-interface</li><li>▪ LAN (Ethernet)</li></ul>
<b>Weight</b>	<ul style="list-style-type: none"><li>▪ Empty: Approx. 650 kg</li></ul>	<b>User guidance</b>	<ul style="list-style-type: none"><li>▪ Intuitive user prompting</li><li>▪ Menu-guided cleaning with animation</li><li>▪ Error correction assistant</li></ul>
<b>Electrical data</b>	<ul style="list-style-type: none"><li>▪ 3L/N/PE, 400 V, 50 Hz</li></ul>	<b>Temperature</b>	<ul style="list-style-type: none"><li>▪ +5 °C up to +40 °C non-condensing</li></ul>
<b>Power</b>	<ul style="list-style-type: none"><li>▪ 4,000 W / Full power</li><li>▪ Idle: 70 W</li></ul>	<b>SiDrop-Container</b>	<ul style="list-style-type: none"><li>▪ Collection of reusable glass and/or PET-bottles</li><li>▪ Separate emptying station for the ergonomic removal of bottles</li><li>▪ Power and data connections are automatically linked when the container is pushed into the housing and emptying station</li><li>▪ Collection capacity: up to 500 bottles</li><li>▪ Dimensions: 1,200 x 800 x 1000 mm (height x width x depth)* (Euro pallet)</li><li>▪ In conjunction with the SoftDrop, three material separations possible: 2 x non-reusable, 1 x reusable</li></ul>
<b>Conformity</b>	<ul style="list-style-type: none"><li>▪ CE, UKCA, DPG-certified</li></ul>		
<b>Security concept</b>	<ul style="list-style-type: none"><li>▪ Software-supported and mechanical protection against manipulation DPG-security package</li></ul>		
<b>Acceptance speed</b>	<ul style="list-style-type: none"><li>▪ According to 60 containers per minute</li></ul>		
<b>Display</b>	<ul style="list-style-type: none"><li>▪ High resolution 10.1" HD display with viewing angle</li></ul>		



SiCompact 2020 XL with two roller containers in Euro pallet size

\* The cabinet dimensions may vary due to fixtures and accessoires

# Ausstattung

## Omega 360 degree container recognition, SiDrop and Dockingstation



### Omega 360° recognition

When inserting the container, barcodes and DPG safety labels are recognised easily, quickly and reliably without any rotation.

The speed is set by the customer themselves to ensure a pleasant return experience.

The non-rotating return process reduces leakage of residual liquids and prevents contamination. What's more, the particular Omega form cuts the effects of contamination to a minimum.

Omega 360° reliably recognises the container – even if it is not cylindrical or has become deformed. You will therefore be ideally equipped for future packaging forms.

### Optional: SiDrop (available for SiCompact 2020 XL)

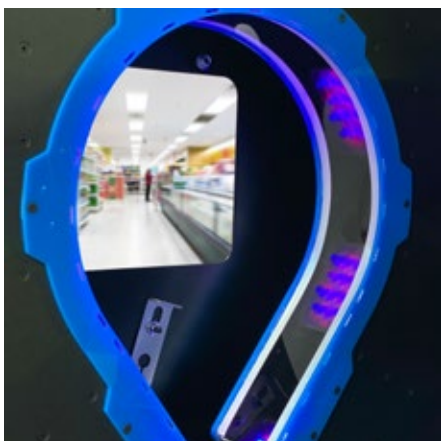
The SiDrop enables the acceptance of reusable containers and packs in very small spaces. Sensitive glass, PET or reusable containers as well as to-go cups from the food sector are carefully accepted on a flexible belt that automatically adjusts its height to the filling situation.

### Optional: Docking station (available for SiCompact 2020 XL)

The SiDrop container is removed and connected to the docking station. The belt is continually raised for emptying purposes to enable ergonomic and comfortable removal of the content by employees.



SiDrop at the docking station (both optional)



Omega 360° recognition



Optional: SiDrop (SiCompact 2020 XL)



Optional: Docking station



Sielaff GmbH & Co. KG  
Automatenbau Herrieden  
Münchener Str. 20  
91567 Herrieden  
Germany

Telephone: +49 9825 18-0  
Telefax: +49 9825 18-311155  
info@sielaff.de  
www.sielaff.com

**See here for our  
company profile video**

